

GEMAS FLAT MODEL UNDERWATER LIGHTS FOR CONCRETE POOLS



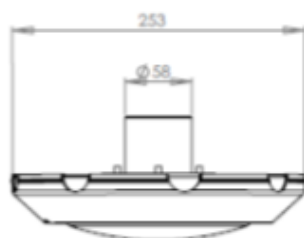
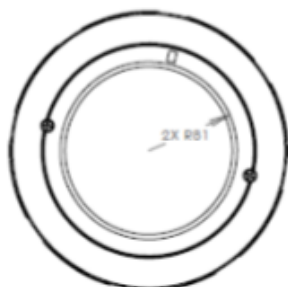
Product Details: "LED - Flat" Underwater Light Without Niche.

Made of white ABS plastic. Light screen in transparent polycarbonate. Supplied with below-mentioned LEDs and cable of 2,5 m.

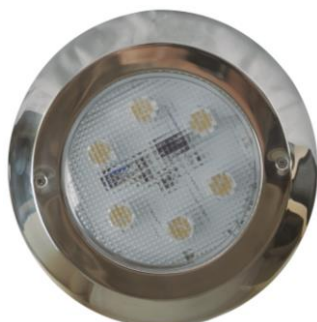
NOTICE! : Light and PCB is sealed against water leakage. In order to prevent defects due to short circuit, the supplied cable (or an equivalent seamless cable) must be used without any underwater joints. If cable joint must be done under water, it has to be done with proper special underwater point. Otherwise the transformer could be damaged.

Technical Characteristic

- All Led models are in A + energy class.



- Optional AISI 304 and 316 face ring.



Code	Description	Led Quantity	Voltage (V)	AC V Power (W)	Led Intensity (lm/m ²)	Light Angle
051116LPW	Complete Flat Light with Single Colour PAR 56 SMD with 63 Led – White Bulb	63	12	20	2490	140°
051116LPD	Complete Flat Light with Single Colour PAR 56 SMD with 63 Led – Daylight Bulb	63	12	20	3150	140°
051116LS	Complete Flat Light with RGB PAR 56 SMD with 54 LED - Built-in PCB System Bulb	54	12	15	1134	120°
051116-0531111	Complete Flat Light with Single Colour PAR 56 SMD with 252 Led – White Bulb	252	12	30	4834	120°
051116-0531112	Complete Flat Light with Single Colour PAR 56 SMD with 252 Led – Daylight Bulb	252	12	30	4834	120°
051116-0531211	Complete Flat Light with RGB PAR 56 SMD with 252 LED - Built-in PCB System Bulb	252	12	30	2217	120°

